



Creating an Integrated Healthcare Delivery and Finance System

Albert L. Wright, Jr.
Jim Pennington

Agenda

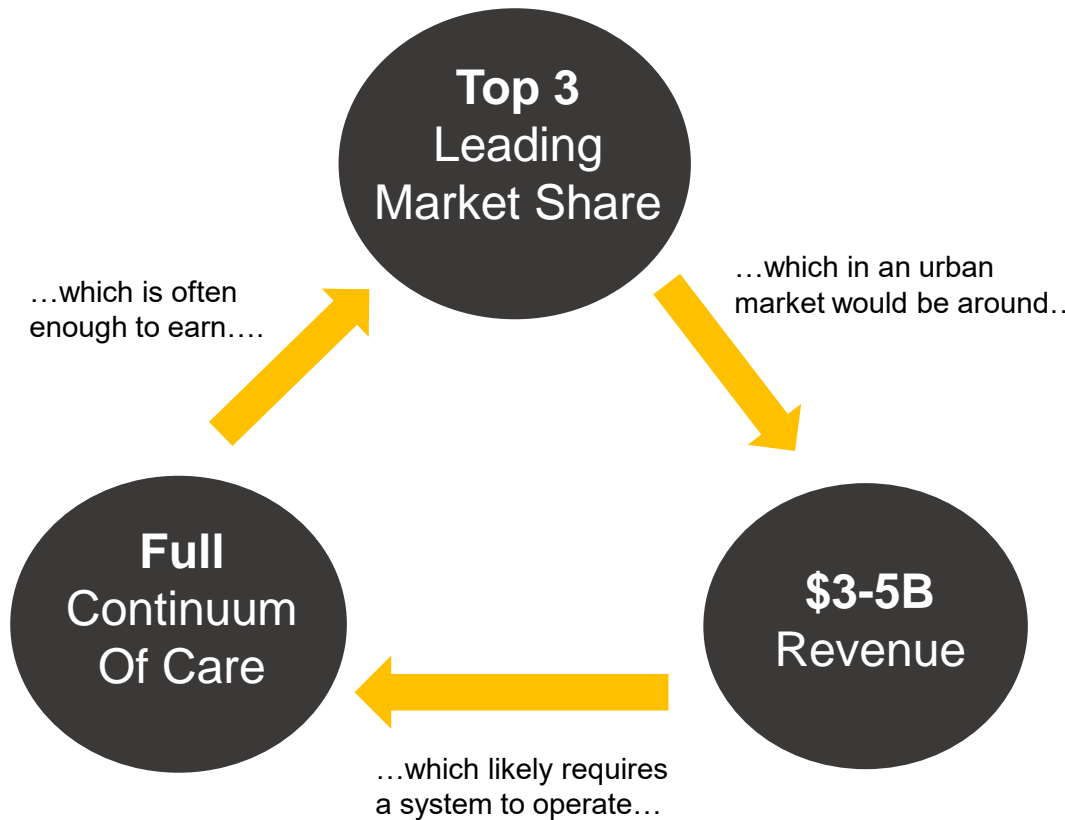
- Section 1: WVU Medicine
- Section 2: The Health Plan
- Section 3: A Conduit to Better Health in West Virginia

Section 1



WVU Medicine

Characteristics of a Well-Positioned Healthcare System



Influencing the Future of Medicine

Cost

- Achieve Financial Alignment
- Pharmaceuticals and Medical Supplies



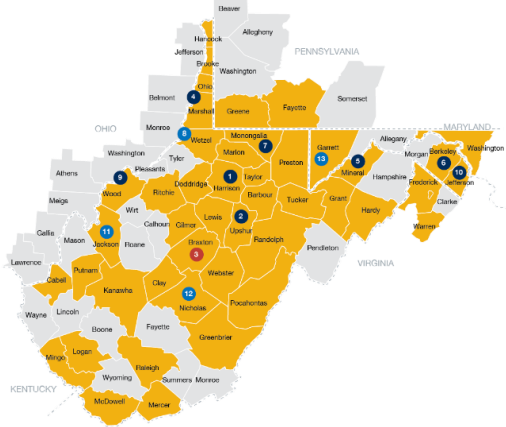
Quality

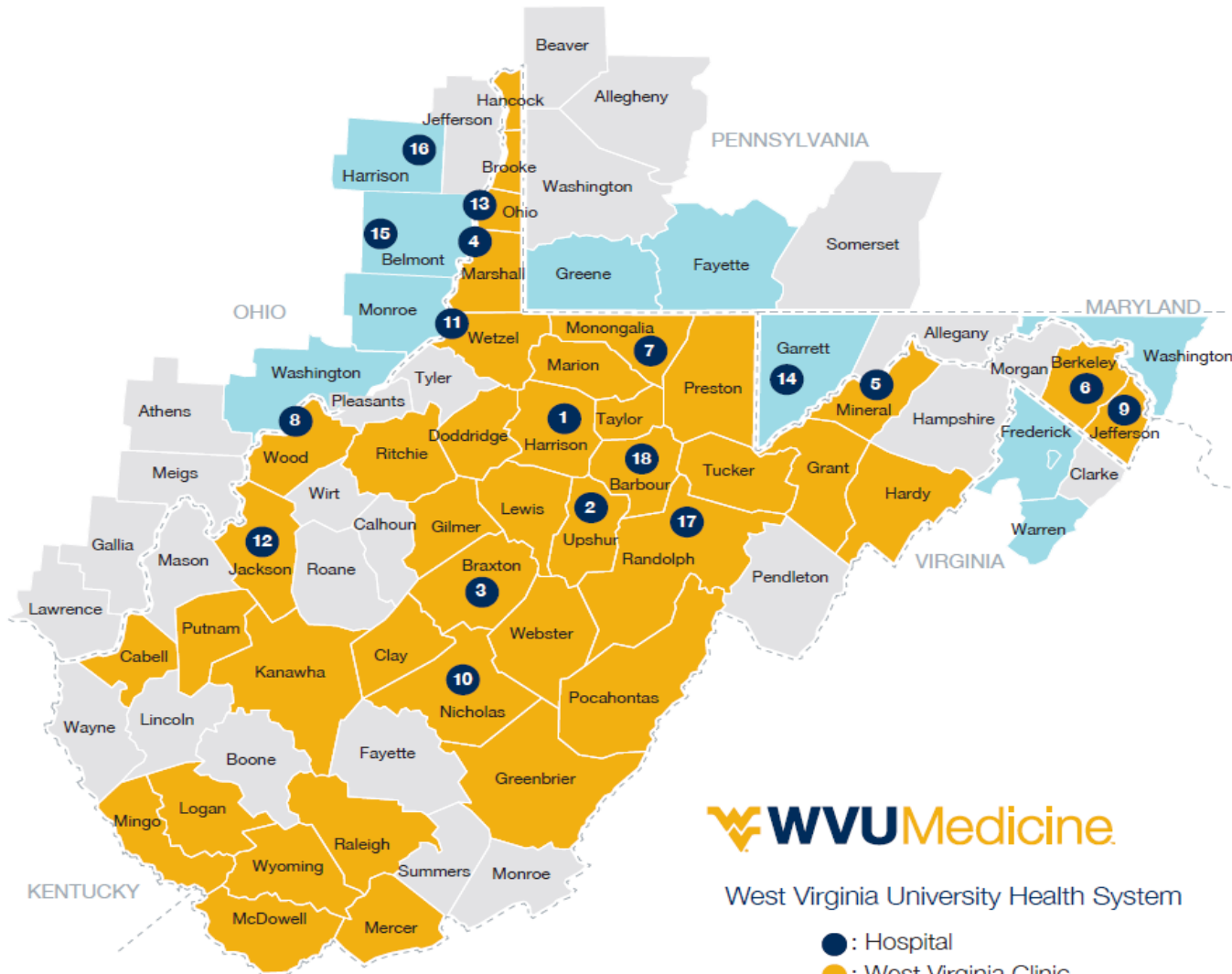
- Activate and Engage Patients
- Evidence-Based Practices



Access

- Bricks and Mortar
- Virtual Platforms
- Partnerships





West Virginia University Health System

- : Hospital
- : West Virginia Clinic
- : Out-of-state Clinic

Member System Hospitals

1. **BRIDGEPORT**
United Hospital Center
2. **BUCKHANNON**
St. Joseph's Hospital
3. **GASSAWAY**
Braxton County Memorial Hospital
4. **GLEN DALE**
Reynolds Memorial Hospital
5. **KEYSER**
Potomac Valley Hospital
6. **MARTINSBURG**
Berkeley Medical Center
7. **MORGANTOWN**
J.W. Ruby Memorial Hospital and WVU Medicine Children's
8. **PARKERSBURG**
Camden Clark Medical Center
9. **RANSON**
Jefferson Medical Center
10. **SUMMERSVILLE**
Summersville Regional Medical Center

Managed Hospitals

11. **NEW MARTINSVILLE**
Wetzel County Hospital
12. **RIPLEY**
Jackson General Hospital
13. **WHEELING**
Wheeling Hospital
14. **OAKLAND, MARYLAND**
Garrett Regional Medical Center
15. **BARNESVILLE, OHIO**
Barnesville Hospital
16. **CADIZ, OHIO**
Harrison Community Hospital

Affiliate Hospitals

17. **ELKINS**
Davis Health System
18. **PHILIPPI**
Broadus Hospital



Section 2



The Health Plan

The Health Plan

- A 501c-4 not-for profit corporation, chartered in West Virginia in 1979 with over 200,000 members
- One of only two domestic carriers in West Virginia – only one corporately headquartered in West Virginia with 544 employees at three locations



The Health Plan

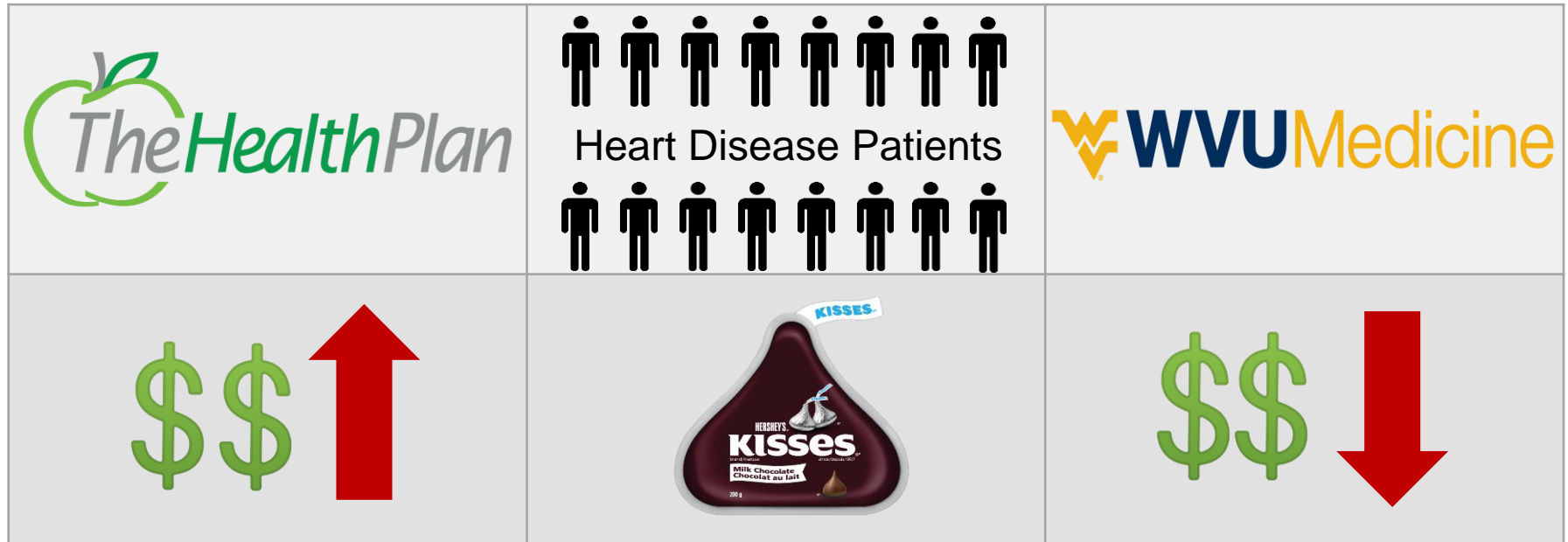
- Fully insured HMO/PPO option to **PEIA** since 1981 with over 14,500 members
- Over 25 years operating as a licensed TPA in West Virginia
- WV Medicaid MCO since 1997, managing over 80,000 beneficiaries
- WV Medicare MCO since 1982, managing over 24,000 beneficiaries

Section 3



A Conduit to Better Health in West Virginia

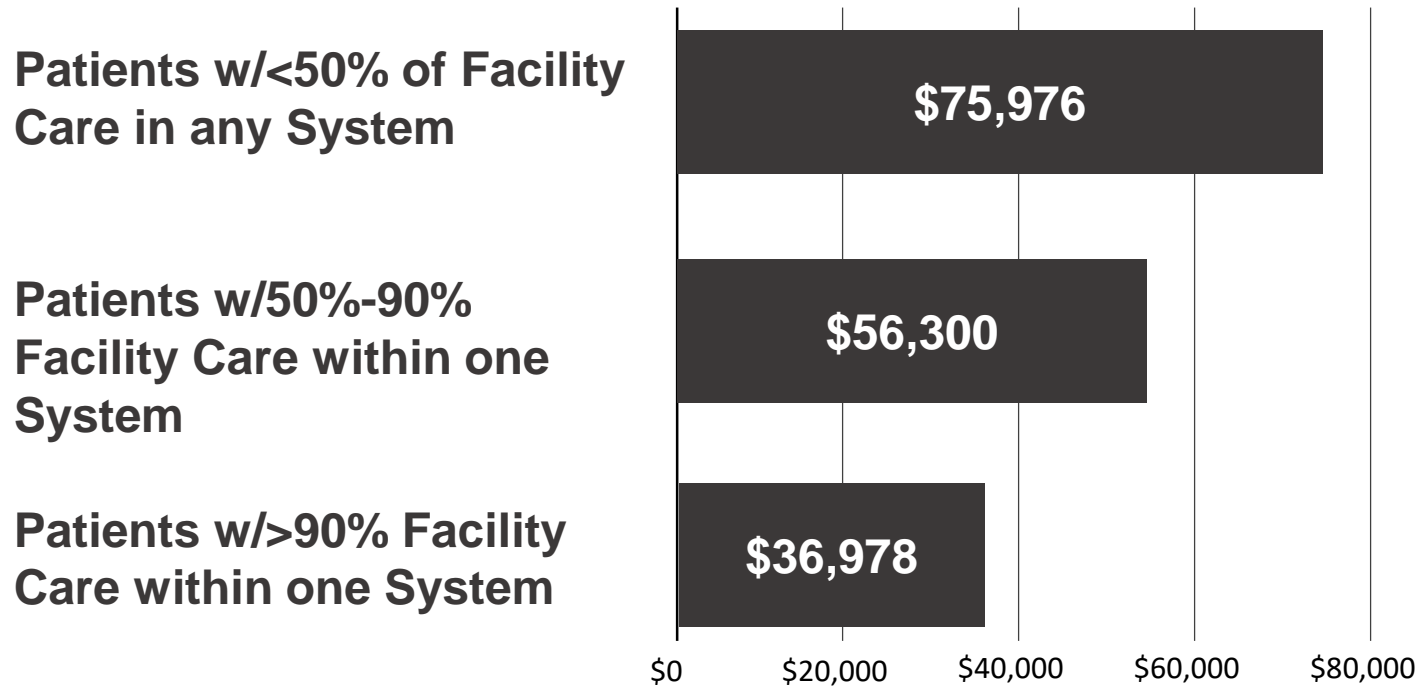
An Example of Financial Misalignment



- New model will achieve financial alignment
- Shift resources upstream to focus on improved health
- Will continue to partner with other entities

Benefits of an Integrate Delivery & Finance System (IDFS)

Average 3-year episode spend, advanced chronic illness (Medicare claims as proof of concept proxy)



Similar Outcomes with Similar Health Systems



Utah-based not-for-profit healthcare system, Intermountain, created a “Reimagined Primary Care” model focused on preventive care that has produced strong results since 2018:

- **60% reduction** in Medicare Advantage admissions
- **25% fewer** Commercial insurance admissions
- **20% decrease** per-member per-month costs
- **Improved** patient ratings
- **Improved** physician satisfaction

Similar Outcomes with Similar Health Systems



Healthcare systems are transitioning from volume to value-based systems of care thus creating a higher quality of care at a more affordable, lower cost to the member



Thank You!